

July 2003

New MicroStation Tools

Three Microstation J tools that provide useful function while preparing "J users" for the transition to Microstation V8.

[Popset - Popset Utility](#)

[Infosnap - Information Snap](#)

[Qsnap - Quick Snap](#)

These three utilities are integrated in our Microstation installation. Popset is automatically loaded, while the InfoSnap and QSnap loading and settings tools are available on the new standard RD_SNAP tool box, available via the RD_DSN tool frame.



July 2003

New MicroStation Tools

The Popset utility hides the tool setting box after the user has set the desired parameters.

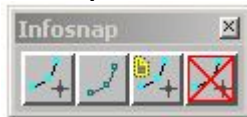
The advantage of this tool is that it gets rid of the tool setting box after the parameters have been set by user and free up the working area for placing and editing MicroStation elements.



July 2003

MicroStation Tools

InfoSnap



InfoSnap displays certain attributes of an element when you snap to that element.

When activated, Infosnap provides a wide range of settings.

Activate InfoSnap



Once activated, you can snap to an element and the information about that element will appear like so...

RD	12004_rdy_row_verJ.dgn
Type	Line
X	987061.5620
Y	691359.1190
LV	1
CO	3
WT	5
LC	0
Length	158.1665'

Typical Infosnap Pop-up Window

While this pop-up is active ...

Infosnap has the potential to become a more powerful tool. The Infosnap native mode is to function as an informative tool only. But with some user interaction, this utility functions as an editing tool.

Here are some of examples...

Hit the up or down key and some of the items are highlighted. Pick any attribute row (LV, CO, WT, or LC) and hit the INSERT key and notice that the attribute is now the active attribute.

If you wanted to make all of the attributes of a selected element active, just tentative to that element and hit the INSERT key.

If you have the Perimeter, Length, or Radii box turned on in your Main Settings box, the corresponding data from InfoSnap works directly with AccuDraw.

Try this - activate AccuDraw. Select your Place Arc tool. DP for the first arc endpoint and tentative to an arc element. Hit the down arrow key until Radius is highlighted in the InfoSnap pop-up. Hit the INSERT key.

The radius of that arc is fixed into the AccuDraw dimension. Hit a data point to accept and complete the curve. This will also work for length and diameter.

Try another.

Tentative to an element in a reference file, highlight the RF row, and hit the INSERT key.

The reference file is now active.

Hit the Home key. You are now back in the previous file - you are back "home"

This also works with text attributes and making them active.

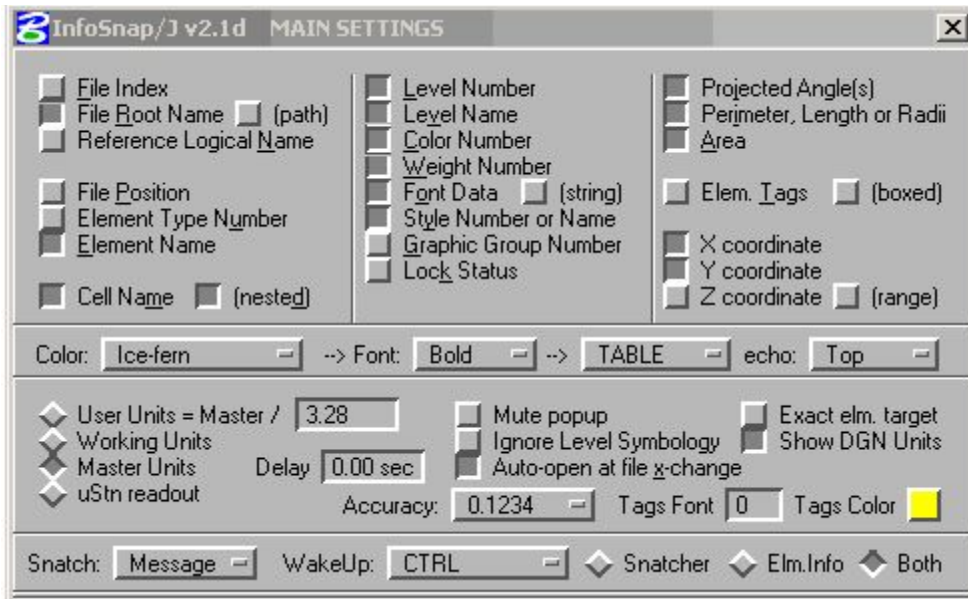
Mute/UnMute (Toggle)



Used to temporarily turn the InfoSnap feature off or on, (after activation).

Main Settings





Main Settings Dialog

Note: You can close this box and InfoSnap will remain active.

In the following text:

Red Text = Recommended option to be turned on.

BOLD Text = Row header.

File Index - **RF** - Slot number in the order it is in file reference.

File Root Name- File name. (path) - Full path to the file.

RD - Active file.

RF - Reference file.

Reference Logical Name - **Logical** - Reference file logical name.

File Position - **Fpos** - Element file position number.

Element Type Number - **Type** - Element type number.

Element Name - **Type** - Corresponding name to element type number.

Cell Name - **AC** - Name of cell (nested) - - Name of nested cell(s), 5 max.

Level Number - **LV** - Level number or level range (Cells).

Level Name - **LV** - Name of level (very important in V8).

Color Number - **CO** - Number for corresponding color.

Weight Number - **WT** - Number for corresponding weight.

Font Data - Text attributes (string) - Text - Actual text typed

FT - Number for corresponding font

TW - Text width

TH - Text height

TXJ - Text justification

aa = Text angle of placement to the design plane (Conventional).

Style Number of Name - **LC** - Line style number or name

Graphic Group Number - **GG** - Number to corresponding graphic group (what?)

Lock Status - **Lock** - Indicates whether element can be edited (OFF or ON)

Projected Angle(s) - **A: planes** - Angle projected on three planes (Conventional)

2D Files **A: XY** - Angle project on X and Y planes

3D Files **A: XY** - Angle projected on X and Y planes

A: XZ - Angle projected on X and Z planes

A: YZ - Angle projected on Y and Z planes

Perimeter, Length, or Radii - **Radius** and **Diam, Perim** , or **Length** - 2D dimensions

Area - **Area** - Area measurement of an element

Elem. Tags - **T: Tag Name** - Value of corresponding tag

(boxed) - **Tag Set : Tag Name = Value** - Display tag info. inside/outside box.

X coordinate - **X** - (Easting in bearings)

Y coordinate - **Y** - (Northing in bearings)

Z coordinate - **Z** - Elevation

(range) - **ZRange** - Lowest elevation : Highest elevation (Refer to giving direction in 3D)

Color - Color scheme of box

Font - Define how Infosnap displays information.

[Various Formats] - **BANNER, TABLE**, Compact, or Micro (Note, most Infosnap functions only work in TABLE Format.

echo - Also display Infosnap information top or bottom of design file, or none (Not at all)

Length, Perimeter, and Area can be displayed in four modes.

User Units = Master/ Divisor - Good for displaying alternate unit (English vs. Metric)

English to Metric - Divisor = 3.2808

Metric to English - Divisor = 0.3048

Working Units - Design file sub unit (i.e. ")

Master Units - Design file master unit (i.e. ')

Stn readout - Settings from design file coordinate readout.

Delay - Time set to display pop-up information box after a snap (sec)

Mute popup - Turn Infosnap pop-up window On and Off

Ignore Level Symbology - Overrides level symbology scheme (highly recommended turn **On**)

Auto-open at file x-change - Activate Infosnap with/without Secondary Settings box

Exact elm. Target - **+Type** - This Option is used to identify the element in a cell as an actual type, not as a cell.

Show DGN Units - Option to display units and readout on the MicroStation title bar

Accuracy- How precise do you want it?

Tags Font - Font number used to display tags if (boxed) is off.

Tags Color - Color number used to display tags if (boxed) is off.

Snatch - The ability to display user or MicroStation messages closer to the cursor.

Message-User defined message and MicroStation measuring tools readout

Status- MicroStation status readout (lower right message bar in design file)

Prompt- MicroStation prompt readout (lower left message bar in design file)

Error- MicroStation error message (located in the same place as prompt)

None-

WakeUp- That's what you need to do. If you have read this manual this far, I am very impressed.

Actually this button defines the keystroke necessary to recall the last message. It's the "say what?" button.

Snatcher, Elm. Info, or Both - Fries, Onion Rings, or Both? Have it your way. Choose the desired Pop-up Box to be Display. If Both is chosen, you can see both, but required more than half a second in the Delay Setting box.

Save - Two methods of saving you settings.

Method 1 - What we are not going to do.

Method 2 - What we are going to do.

We are in favor of choice No. 2 because that's what we are going to do.

Recall - Retrieves your settings store by Method 2.

Deactivate Infosnap



Use this to Deactivate Infosnap only if Infosnap corrupts your file and makes you late for turn in. Otherwise Use the Mute/ Unmute button.

July 2003

MicroStation Tools

QSnap



Qsnap enables you to snap to a keypoint with a single click of the left mouse button.

What's so great about that?

MicroStation V8 has incorporated a similar utility with the Snap Button Bar tool frame called AccuSnap.

In addition, the newer machines have a mouse with middle scroll button. It is a little bit difficult to double click with this scroll wheel to do a MicroStation tentative function. So one viable option to get around this is to activate the Qsnap (AccuSnap in the future) and bring your cursor close to a keypoint and with the left mouse button, click once and your tentative function has just been performed. This works wonders for Intersection of elements. Normally you would have to perform three or more clicks to do "locate the intersection of two elements". With Qsnap, you only need to click once.

Activate QSnap



DeActivate QSnap



Activate QSnap Settings Dialog



QSnap Settings Dialog